



BEVERAGE-AIR

Project: _____

AIA#

Item: _____

Location: _____

SIS#

Approved: _____

SPE ELITE SERIES FOOD PREPARATION TABLES

MODELS:

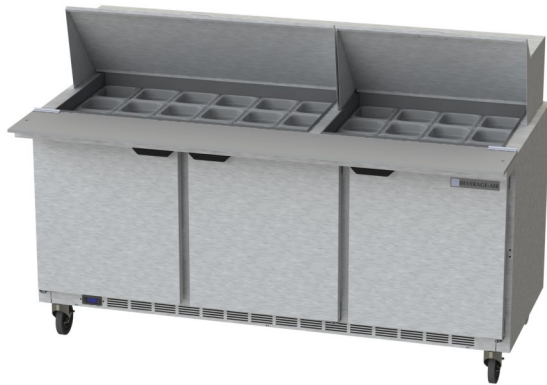
SPE72HC-30M

SPE72HC Mega Top Sandwich Prep Table

Hydrocarbon Series

3 Year Parts/Labor Warranty
Additional 2 Year Compressor Warranty

CABINET CONSTRUCTION



SPE72HC-30M

- Stainless steel front, sides, top, doors and grille (galvanized steel back & bottom)
- Interior liner is made of corrosion resistant aluminum
- Full electronic control
- Removable hoods and insulated lid assemblies are made of matching stainless steel
- Self-closing doors with 120° Stay-open feature, on cartridge style hinges
- Field-reversible doors with snap-in door gaskets
- Painted aluminum door handles
- 3" Casters, 2 with brakes standard
- 10" Wide cutting board constructed of white polyethylene plastic
- Cutting board removable for cleaning
- Two (2) epoxy-coated steel wire shelves per section standard
- Thirty (30) 4" deep pans constructed of polycarbonate plastic
- Enhanced airflow maintains temperature between 36° to 38°F

OPTIONS & ACCESSORIES

- Stainless steel interior option
- Stainless steel back
- Remote options
- Overshelves (single or double)
- Drawers or combination models
- Crumb catcher
- Modified pan openings
- Solid door with locks
- 6" Legs
- 6" Casters
- Low profile casters
- Richlite cutting board
- Night cover

REFRIGERATION SYSTEM

- Refrigeration system uses R290 refrigerant to comply with all environmental concerns
- Airflow assures that product in open containers is kept below 41°F and above freezing
- Recirculated, forced air from evaporator is moved under pans, which are recessed 2" from top of cabinet
- Automatic, non-electric evaporator
- System is serviceable from rear
- Epoxy coated evaporator coil

SPE72HC Elite Series Sandwich Prep: Mega Top Series



3779 Champion Blvd., Winston-Salem, NC 27105
1-888-845-9800 Fax: 1-336-245-6453
Beverage-Air.com sales@bevaair.com



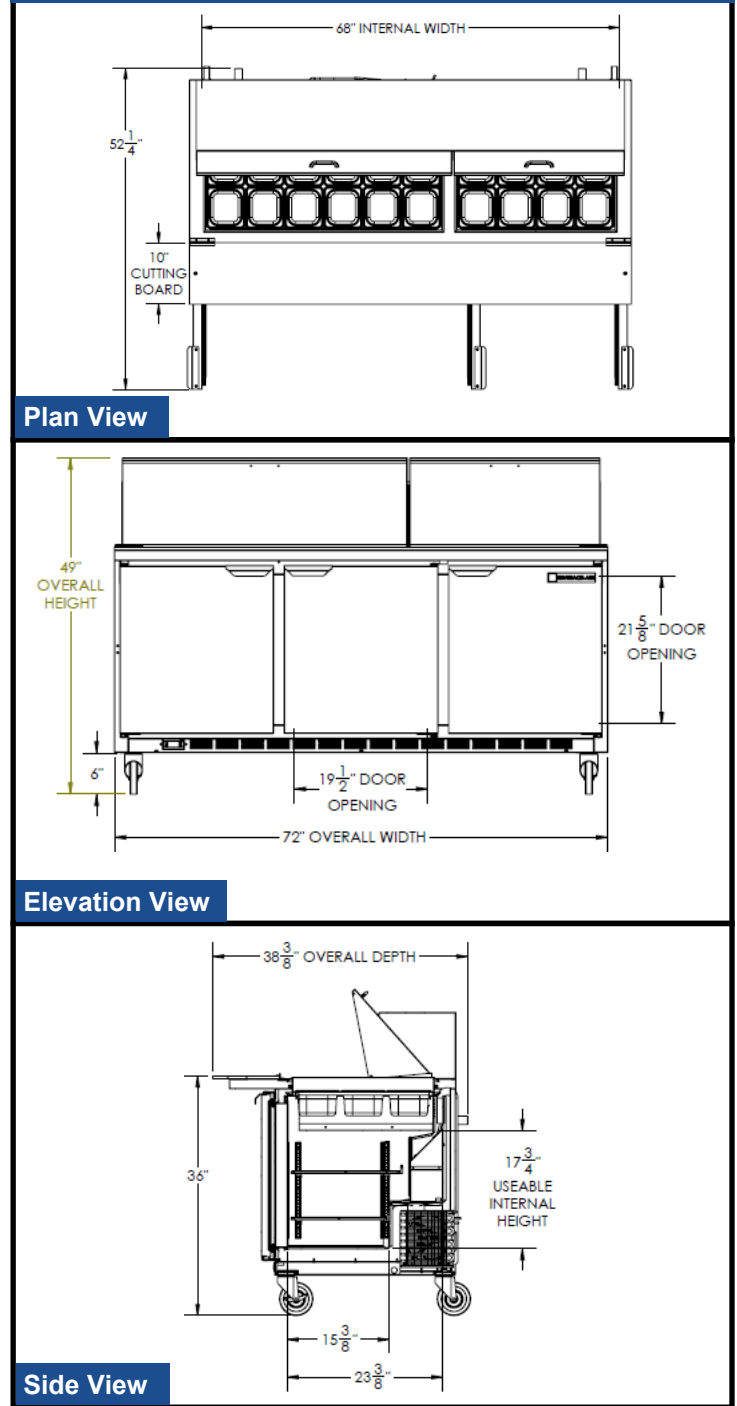
BEVERAGE-AIR

| MODEL | SPE72HC-30M |
|---|--|
| EXTERNAL DIMENSIONAL DATA | |
| Width Overall | 72" |
| Depth Overall with Cutting Board & Bumper | 38 3/8" |
| Height Overall with 6" Casters | 49" |
| Number of Doors | 3 |
| Depth with Door Open 90° | 52 1/4" |
| Solid Door Opening (in) | 19 5/8" x 21 5/8" |
| Depth, Cutting Board | 10" |
| Shelf Area (sq. in) | (L/R) Upper 344 1/2" Lower 367 1/8" (CTR) Upper 302 3/4" Lower 302 3/4" |
| INTERNAL DIMENSIONAL DATA | |
| NET Capacity (cubic ft.) | 21.5 |
| Internal Width Overall (in) | 68" |
| Internal Depth Overall (in) | 23 3/8" |
| Internal Depth Useable (in) | Upper 18 1/2" Lower 15 3/8" |
| Internal Height Overall (in) | 23" |
| Internal Height Useable (in) | 17 3/4" |
| Number of Shelves | 6 |
| Number of Pans | (30) 1/6 |
| ELECTRICAL DATA | |
| Full Load Amperes 115/60/1 | 5.4 |
| REFRIGERATION DATA | |
| Horsepower | 1/3 |
| Capacity (BTU/Hr)* | 1549 |
| WEIGHT DATA | |
| Gross Weight (Crated lbs) | 446 lbs |
| Height - Crated | 48" |
| Width - Crated | 74" |
| Depth - Crated | 38" |

Food Preparation Table - Mega Top

Models: SPE72HC-30M

Model Views



ELECTRICAL CONNECTION

Units pre-wired at factory and include 8' long cord and plug set.



115/60/1
NEMA-5-15P

Revised 4/18



an Ali Group Company



The Spirit of Excellence

3779 Champion Blvd., Winston-Salem, NC 27105
1-888-845-9800 Fax: 1-336-245-6453
Beverage-Air.com sales@bevair.com